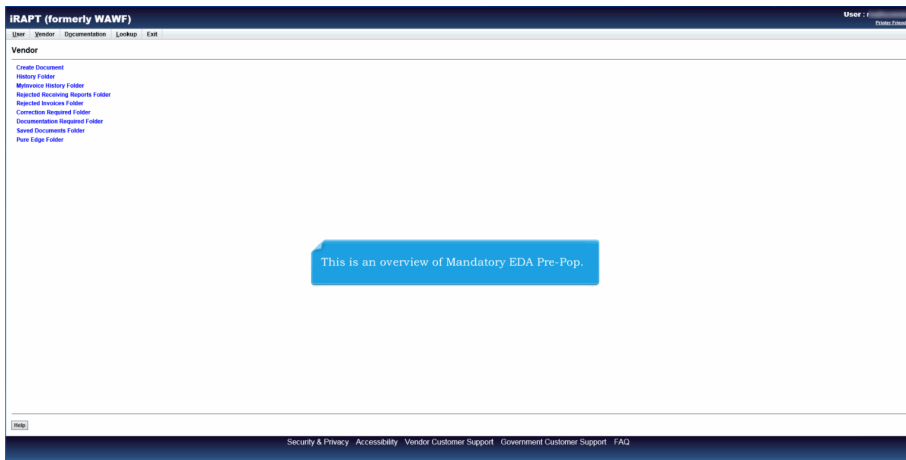
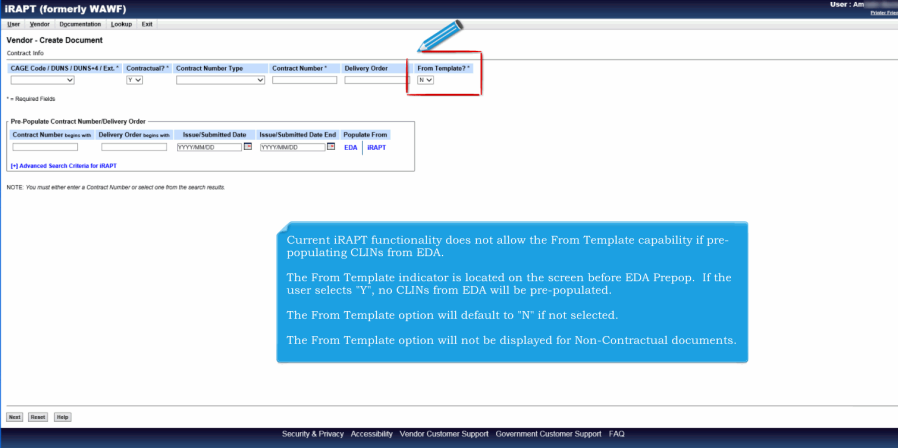


Welcome to Wide Area Workflow e-Business Suite.
This demonstration contains audio narrative. Please adjust your volume accordingly.



This is an overview of Mandatory EDA Pre-Pop.



iRAPT (formerly WAWF)

User: Admin | Home | Logout | Exit

Vendor - Create Document

Contract info

CAGE Code / DUNS / DUNS+4 Ext. Contractual? Contract Number Type Contract Number Delivery Order From Template?

Required Fields

Pre Populate Contract Number/Delivery Order

Contract Number Issues with Delivery Order Issues with Issue Submitted Date Issue Submitted Date End Populate From

Advanced Search Criteria for iRAPT

NOTE: You must either enter a Contract Number or select one from the search results.

Security & Privacy Accessibility Vendor Customer Support Government Customer Support FAQ

Current iRAPT functionality does not allow the From Template capability if pre-populating CLINs from EDA.

The From Template indicator is located on the screen before EDA Prepop. If the user selects "Y", no CLINs from EDA will be pre-populated.

The From Template option will default to "N" if not selected.

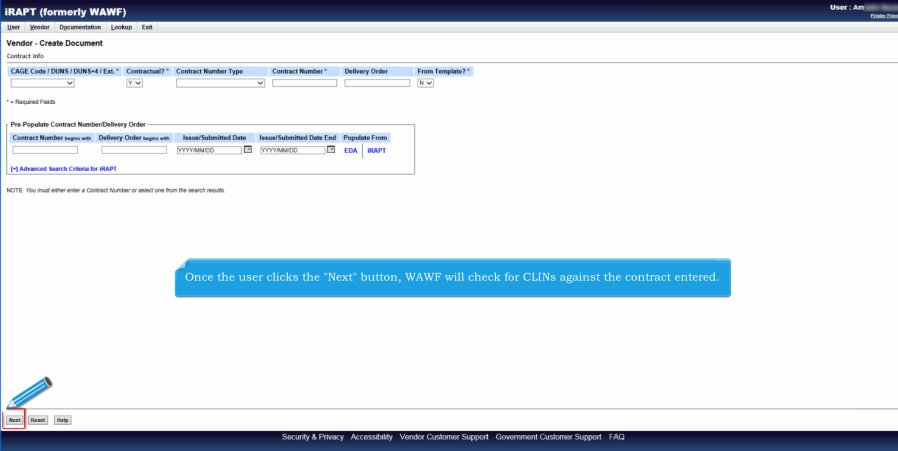
The From Template option will not be displayed for Non-Contractual documents.

Current iRAPT functionality does not allow the From Template capability if pre-populating CLINs from EDA.

The From Template indicator is located on the screen before EDA Prepop. If the user selects "Y", no CLINs from EDA will be pre-populated.

The From Template option will default to "N" if not selected.

The From Template option will not be displayed for Non-Contractual documents.



iRAPT (formerly WAWF)

User: Admin | Home | Logout | Exit

Vendor - Create Document

Contract info

CAGE Code / DUNS / DUNS+4 Ext. Contractual? Contract Number Type Contract Number Delivery Order From Template?

Required Fields

Pre Populate Contract Number/Delivery Order

Contract Number Issues with Delivery Order Issues with Issue Submitted Date Issue Submitted Date End Populate From

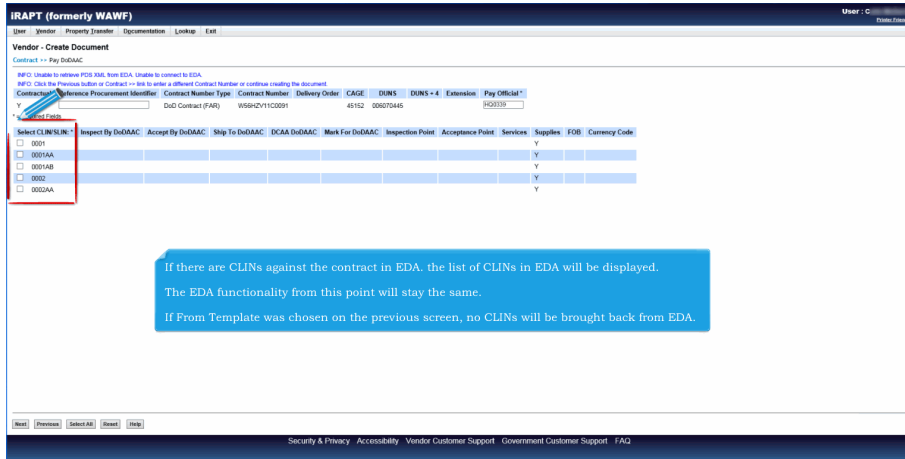
Advanced Search Criteria for iRAPT

NOTE: You must either enter a Contract Number or select one from the search results.

Once the user clicks the "Next" button, WAWF will check for CLINs against the contract entered.

Security & Privacy Accessibility Vendor Customer Support Government Customer Support FAQ

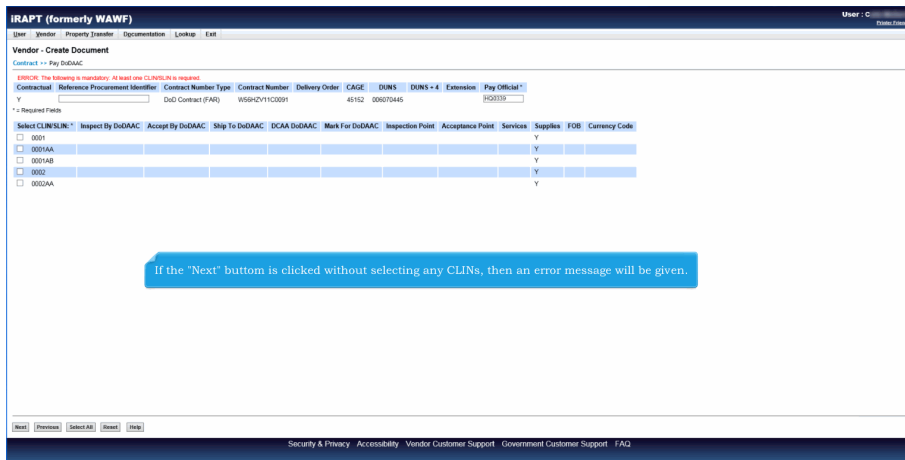
Once the user clicks the "Next" button, WAWF will check for CLINs against the contract entered.



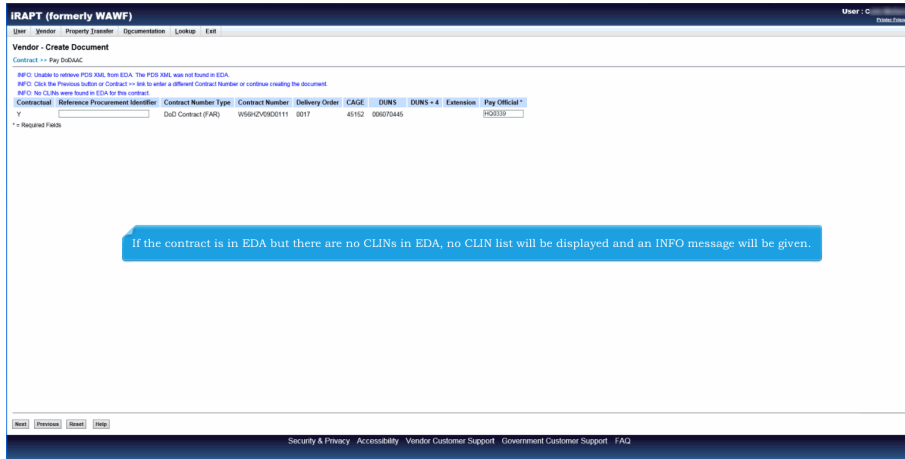
If there are CLINs against the contract in EDA, the list of CLINs in EDA will be displayed.

The EDA functionality from this point will stay the same.

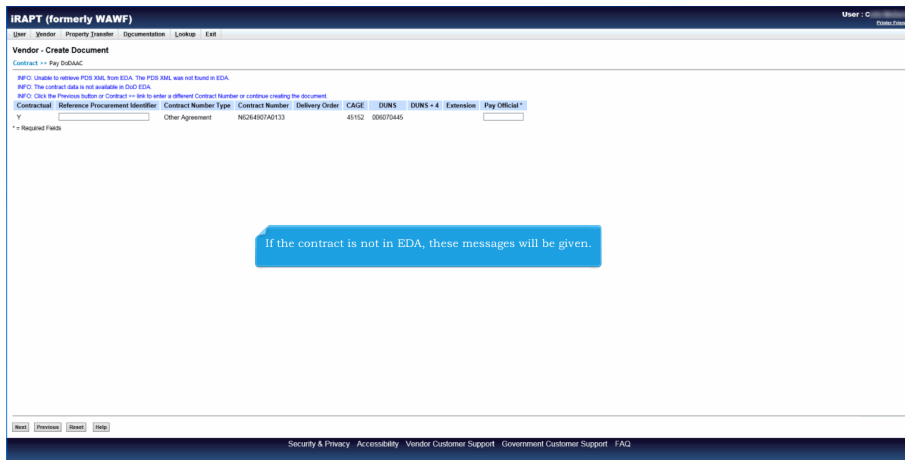
If From Template was chosen on the previous screen, no CLINs will be brought back from EDA.



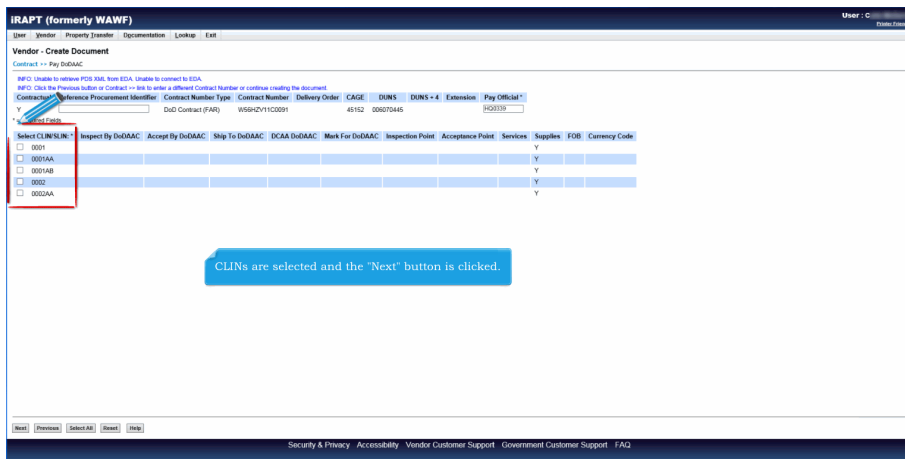
If the "Next" button is clicked without selecting any CLINs, then an error message will be given.



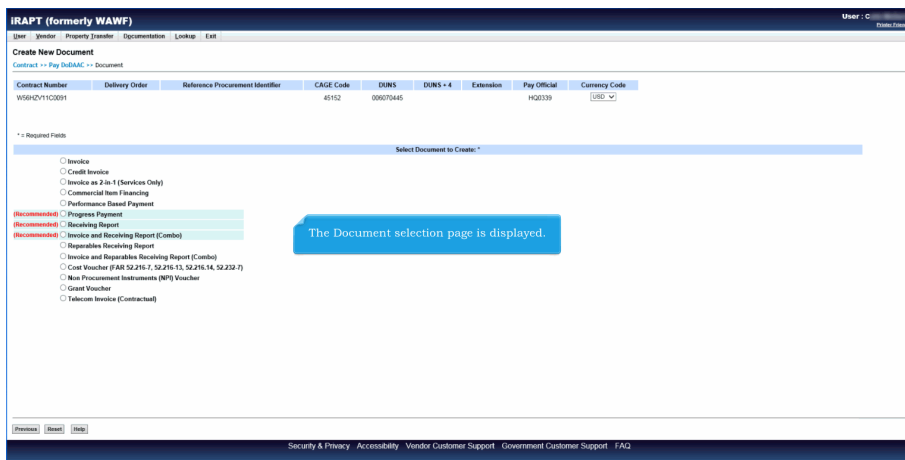
If the contract is in EDA but there are no CLINs in EDA, no CLIN list will be displayed and an INFO message will be given.



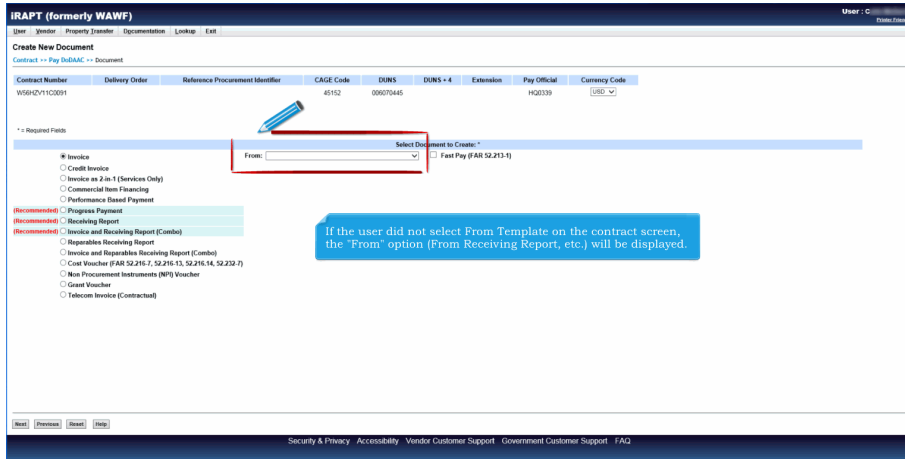
If the contract is not in EDA, these messages will be given.



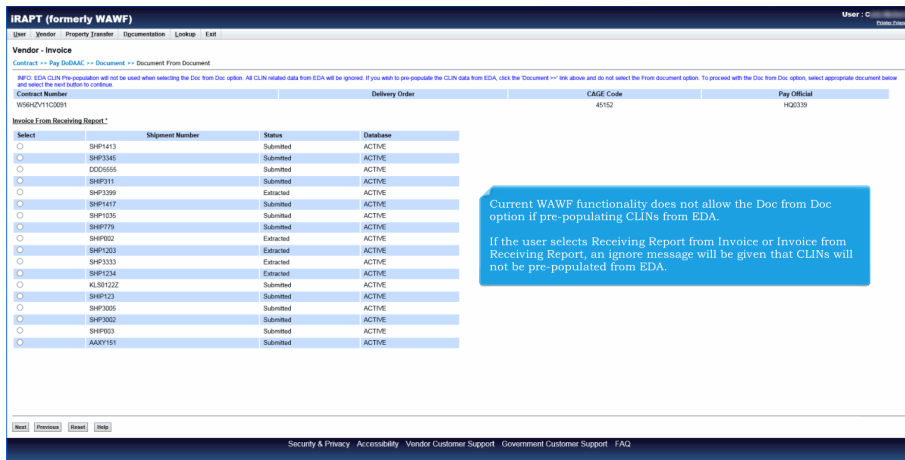
CLINs are selected and the "Next" button is clicked.



The Document selection page is displayed.

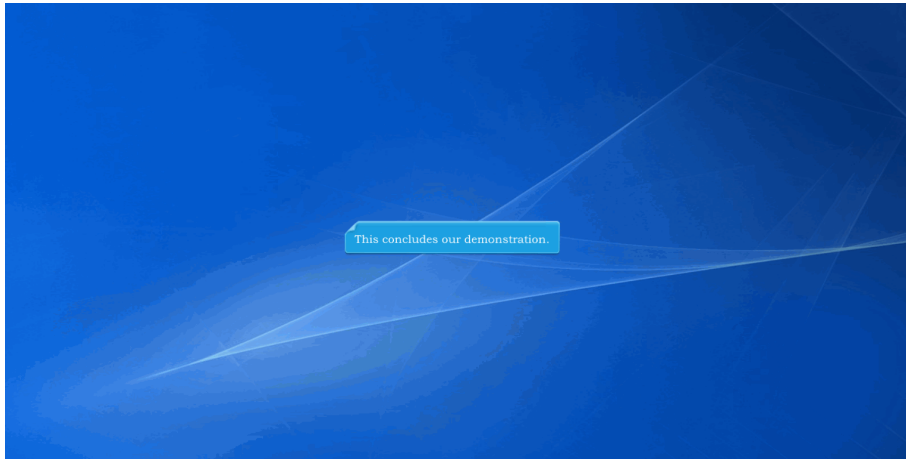


If the user did not select From Template on the contract screen, the "From" option (From Receiving Report, etc.) will be displayed.



Current WAWF functionality does not allow the Doc from Doc option if pre-populating CLINs from EDA.

If the user selects Receiving Report from Invoice or Invoice from Receiving Report, an ignore message will be given that CLINs will not be pre-populated from EDA.



This concludes our demonstration.