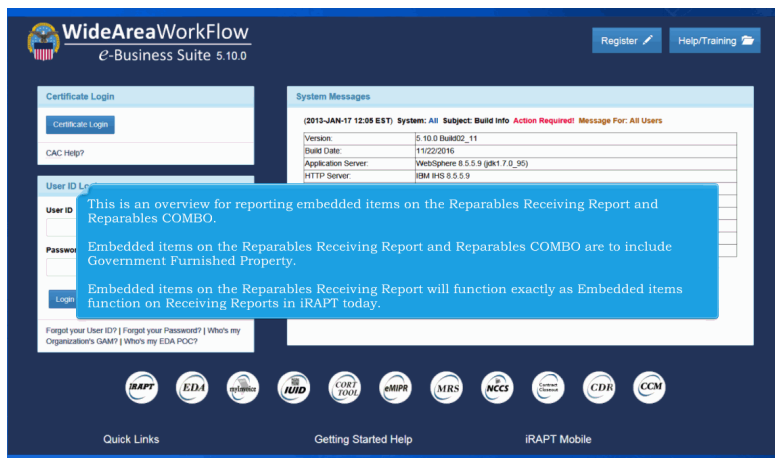


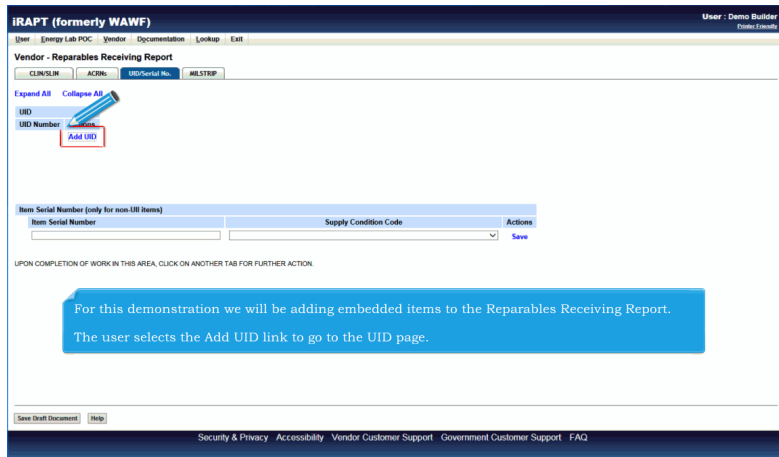
Welcome to Wide Area Workflow e-Business Suite.
 This demonstration contains audio narrative. Please adjust your volume accordingly.



This is an overview for reporting embedded items on the Repairables Receiving Report and Repairables COMBO.

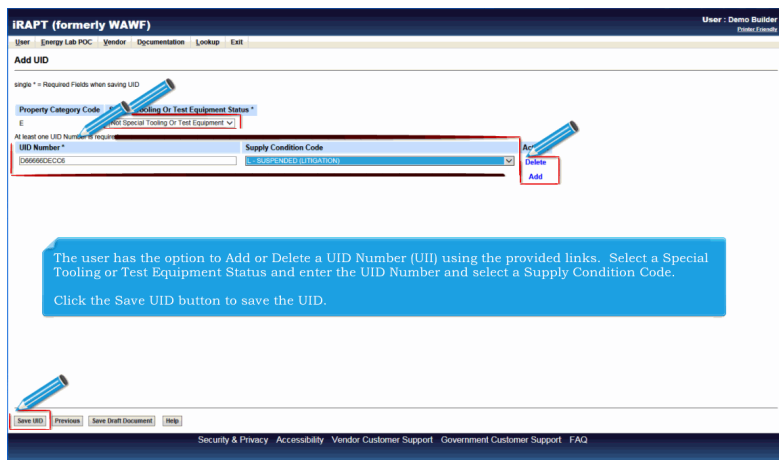
Embedded items on the Repairables Receiving Report and Repairables COMBO are to include Government Furnished Property.

Embedded items on the Repairables Receiving Report will function exactly as Embedded items function on Receiving Reports in iRAPT today.



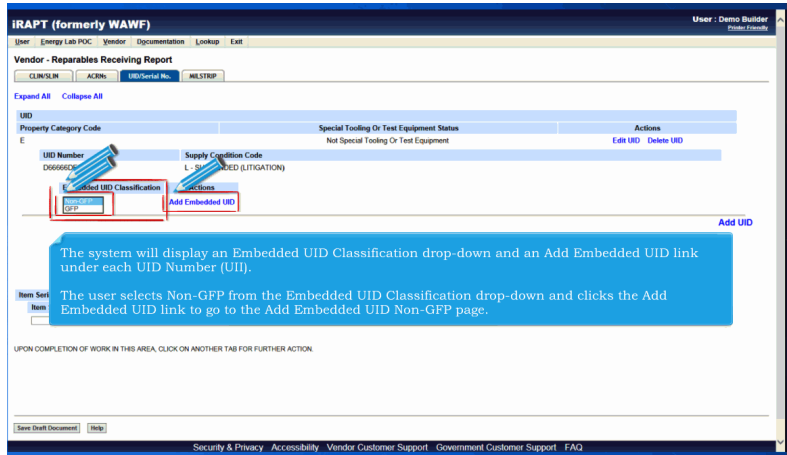
For this demonstration we will be adding embedded items to the Reparables Receiving Report.

The user selects the Add UID link to go to the UID page.



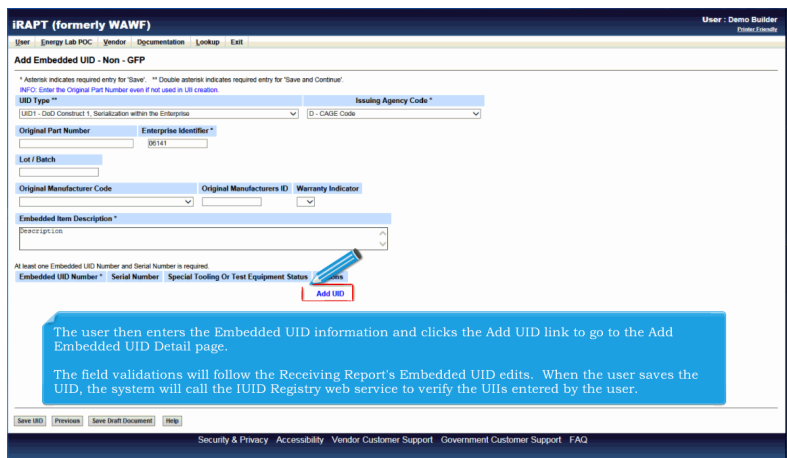
The user has the option to Add or Delete a UID Number (UII) using the provided links. Select a Special Tooling or Test Equipment Status and enter the UID Number and select a Supply Condition Code.

Click the Save UID button to save the UID.



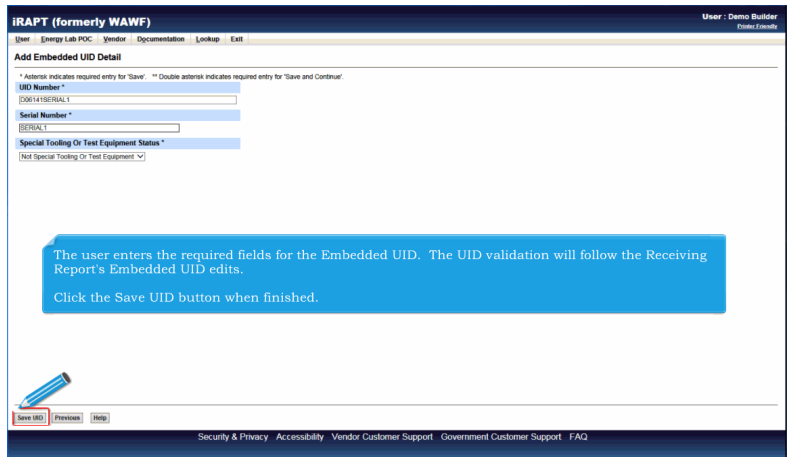
The system will display an Embedded UID Classification drop-down and an Add Embedded UID link under each UID Number (UII).

The user selects Non-GFP from the Embedded UID Classification drop-down and clicks the Add Embedded UID link to go to the Add Embedded UID Non-GFP page.



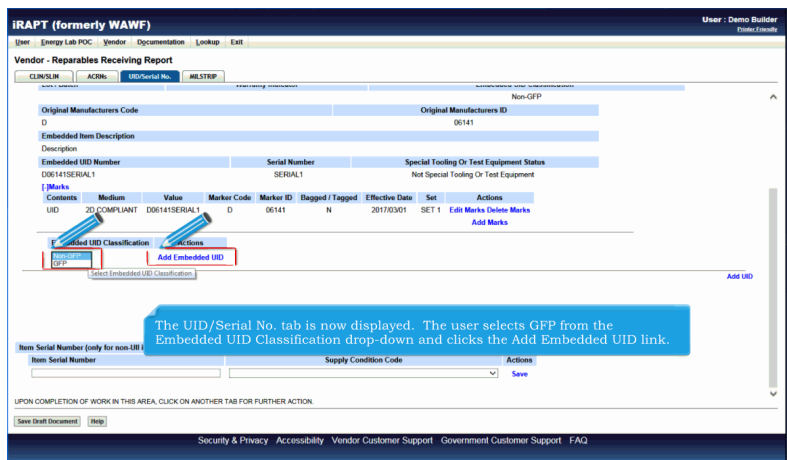
The user then enters the Embedded UID information and clicks the Add UID link to go to the Add Embedded UID Detail page.

The field validations will follow the Receiving Report's Embedded UID edits. When the user saves the UID, the system will call the IUID Registry web service to verify the UIIs entered by the user.

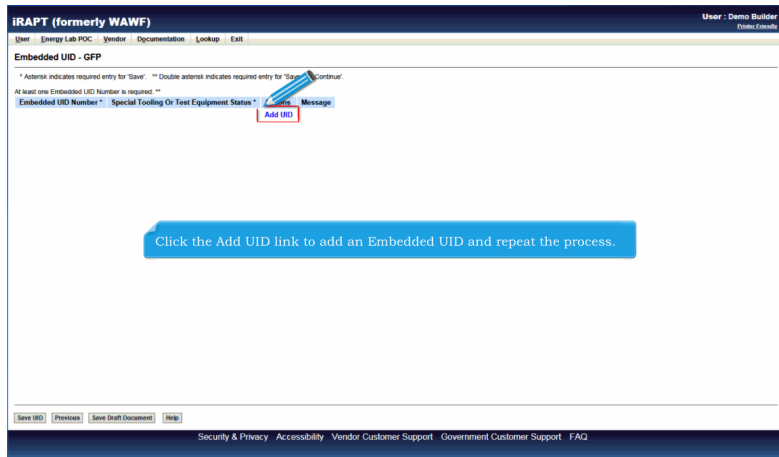


The user enters the required fields for the Embedded UID. The UID validation will follow the Receiving Report's Embedded UID edits.

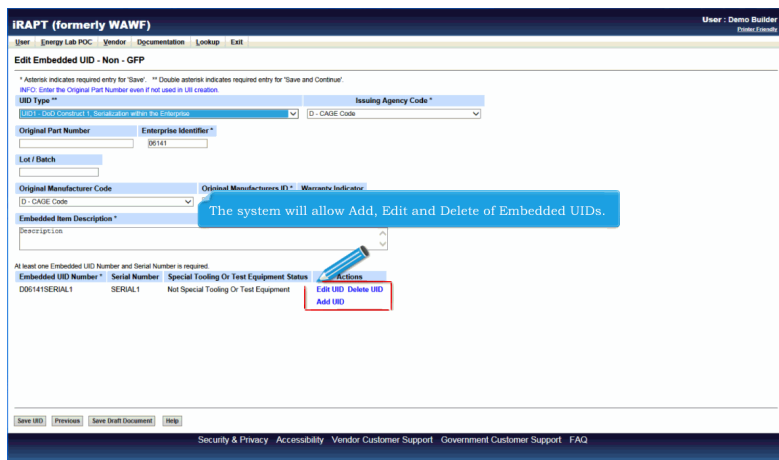
Click the Save UID button when finished.



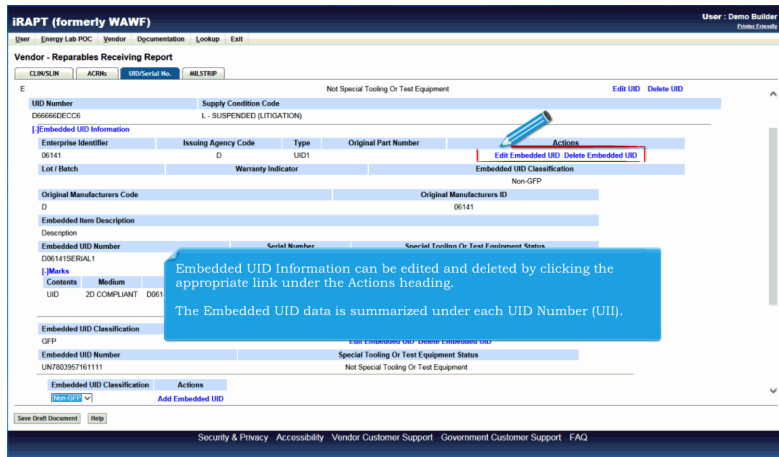
The UID/Serial No. tab is now displayed. The user selects GFP from the Embedded UID Classification drop-down and clicks the Add Embedded UID link.



Click the Add UID link to add an Embedded UID and repeat the process.

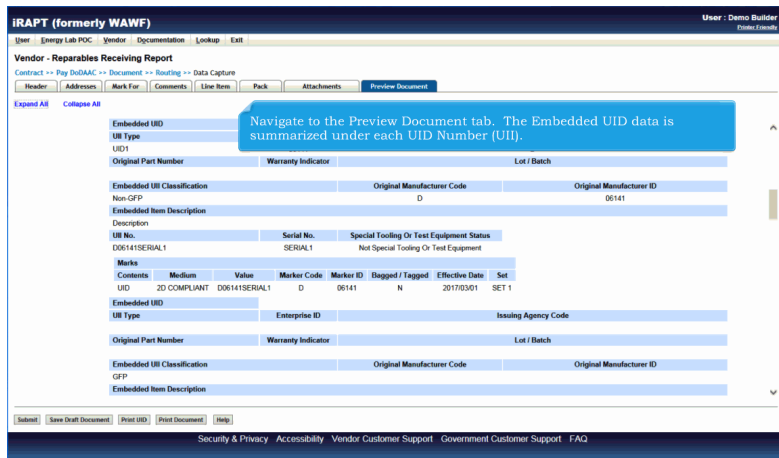


The system will allow Add, Edit and Delete of Embedded UIDs.

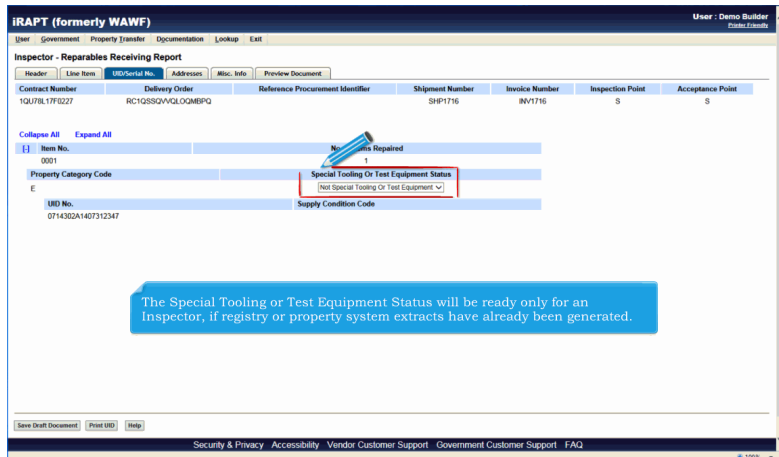


Embedded UID Information can be edited and deleted by clicking the appropriate link under the Actions heading.

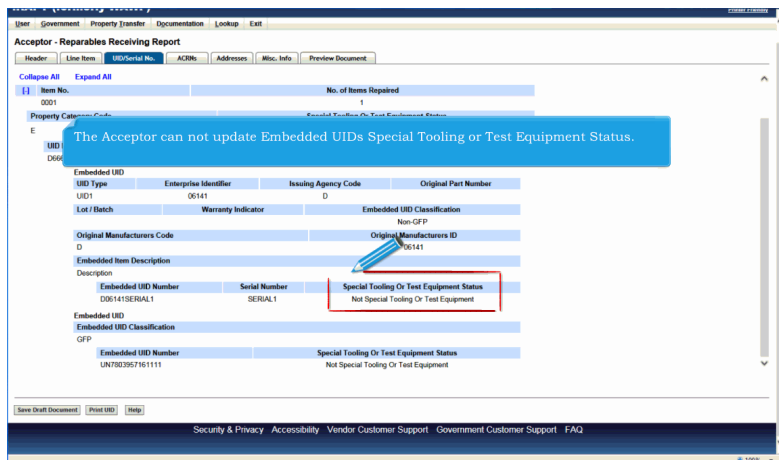
The Embedded UID data is summarized under each UID Number (UII).



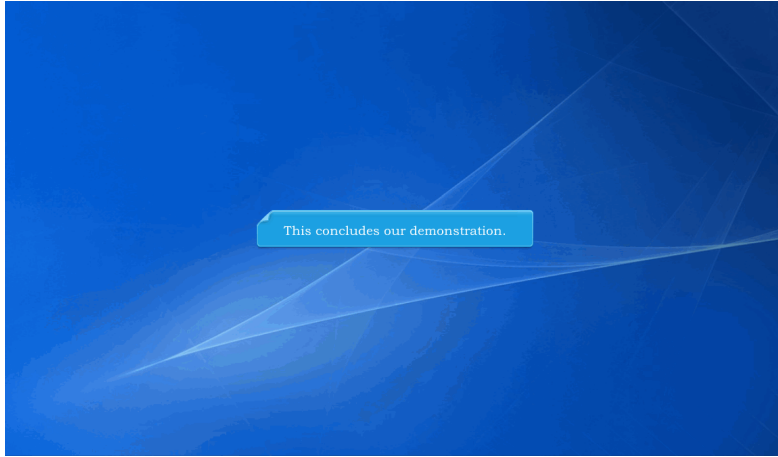
Navigate to the Preview Document tab. The Embedded UID data is summarized under each UID Number (UII).



The Special Tooling or Test Equipment Status will be ready only for an Inspector, if registry or property system extracts have already been generated.



The Acceptor can not update Embedded UIDs Special Tooling or Test Equipment Status.



This concludes our demonstration.